



國立清華大學 分子醫學研究所

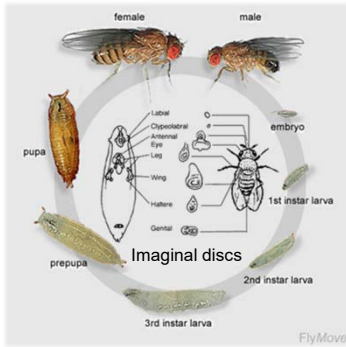
Institute of Molecular Medicine, NTHU

徐瑞洲老師實驗室

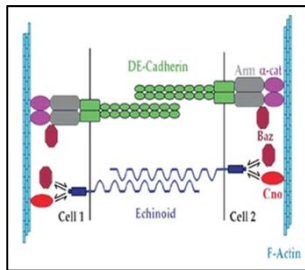
Dr. Jui-Chou Hsu's Lab



生科一館523室 #35858

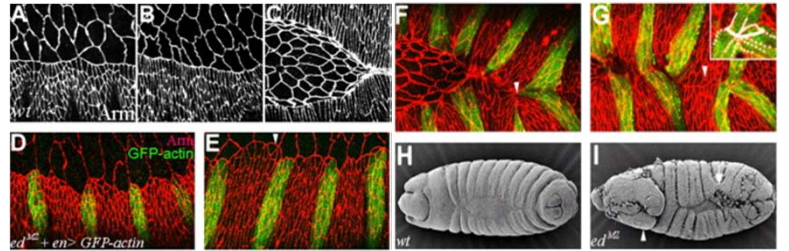


Echinoid(CAM)



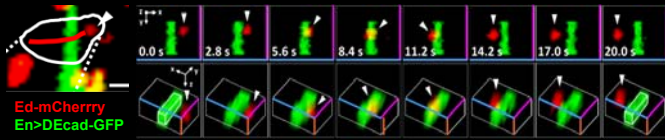
Embryogenesis

Cell adhesion molecule Echinoid associates with unconventional myosin VI/Jaguar motor to regulate cell morphology during dorsal closure in *Drosophila*.



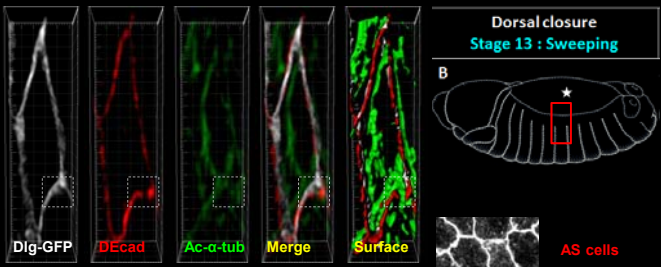
Live imagine

Ed-containing vesicle may move across the PM at AJs

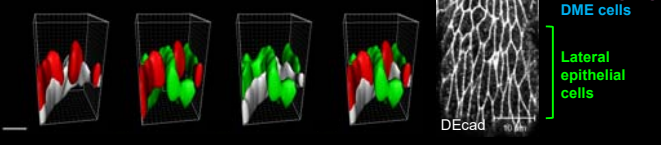


Acetylated-MT can pierce across PM at AJs

A, 3D volume/surface rendering

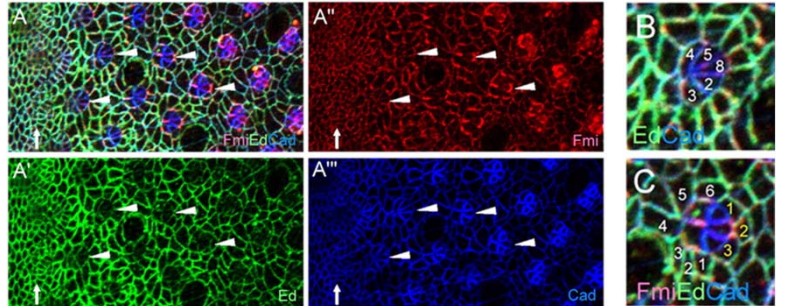


B, 3D surface rendering (Movie)



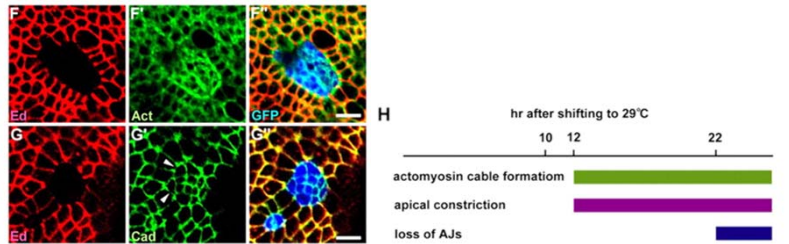
Eye development

Echinoid regulates Flamingo endocytosis to control ommatidial rotation in the *Drosophila* eye.



Wing development

Differential adhesion and actomyosin cable collaborate to drive Echinoid-mediated cell sorting



1. J.-M. Bai, W.-H. Chiu, J.-C. Wang, T.-H. Tzeng, N. Perrimon, and Hsu, J.-C. The cell adhesion molecule Echinoid defines a new pathway that antagonizes the *Drosophila* EGF receptor signaling pathway. *Development* **128**, 591-601, 2001.
2. Islam, R., Wei, S.-Y., Chiu, W.-C., Hortsch, M., and Hsu, J.-C. euroglial activates Echinoid to antagonize the *Drosophila* EGF receptor signaling pathway. *Development* **130**, 2051-2059, 2003.
3. Escudero, L.M., Wei, S.-Y., Chiu, W.-H., Modolell, J., and Hsu, J.-C. Echinoid synergizes with the Notch signaling pathway in *Drosophila* mesothorax bristle patterning. *Development* **130**, 6305-6316, 2003.
4. Wei, S.-Y., Escudero, L.M., Yu, F., Chang, L.-H., Chen, L.-Y., Ho, Y.-H., Lin, C.-M., Chou, C.-S., Chia, W., Modolell, J., and Hsu, J.-C. Echinoid is a novel component of adherens junctions that cooperates with DE-Cadherin to mediate cell adhesion. *Developmental Cell* **8**, 493-504, 2005.
5. Chen, L.-Y., Wang, J.-C., Hyvert, Y., Lin, H.-P., Perrimon, N., Immler, J.-L., and Hsu, J.-C. Weckle is a zinc finger adaptor of the Toll pathway in dorso/ventral patterning of the *Drosophila* embryo. *Current Biology* **16**, 1183-1193, 2006.
6. Lin, H.-P., Chen, H.-M., Wei, S.-Y., Chen, L.-Y., Chang, L.-H., Sun, Y.-J., Huang, S.-Y., and Hsu, J.-C. Cell adhesion molecule Echinoid associates with unconventional myosin VI/Jaguar motor to regulate cell morphology during dorsal closure in *Drosophila*.? *Developmental Biology* **311**, 423-433, 2007.
7. Ho, Y.-H., Lien, M.-T., Lin, C.-M., Wei, S.-Y., Chang, L.-H., Hsu, J.-C. Echinoid regulates Flamingo endocytosis to control ommatidial rotation in the *Drosophila* eye. *Development* **137**(5):745-54. 2010.
8. Chang, L.-H., Chen, P., Lien, M.-T., Ho, Y.-H., Lin, C.-M., Pan, Y.-T., Wei, S.-Y., Hsu, J.-C. Differential adhesion and actomyosin cable collaborate to drive Echinoid-mediated cell sorting. *Development* **138** (17):3803-12. 2011.
9. Lin, C.-M., Lin, P.-Y., Li, Y.-C., Hsu, J.-C. Capulet and Slingshot share overlapping functions during *Drosophila* eye morphogenesis. *J Biomed Sci.* **19**(1):46. 2012.
10. Li, Y.-C., Yang, W.-T., Cheng, L.-C., Lin, C.-M., Ho, Y.-H., Lin, P.-Y., Chen, B.-C., Wayne L. Rickoll, Hsu, J.-C. Novel transport function of adherens junction revealed by live imaging in *Drosophila*. *BMC* **463** 686692. 2015.