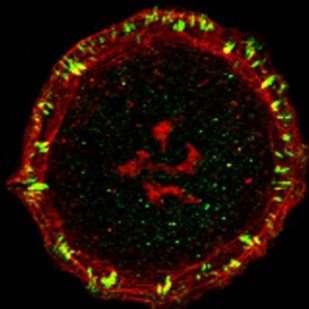


癌症轉移實驗室

Metastasis Laboratory

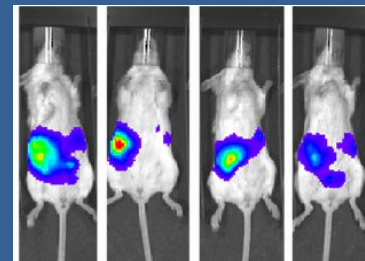


Cell Movement

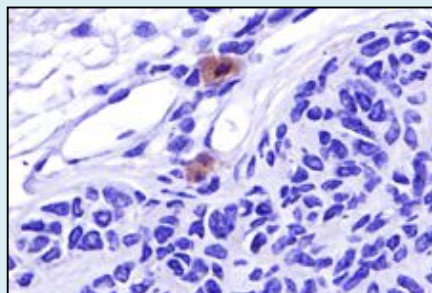


我們實驗室主要在研究腫瘤細胞轉移的機轉，利用細胞培養及小鼠腫瘤模型研究腫瘤細胞如何轉移到遠端器官，藉由了解其機轉而從中找出治療癌症轉移的藥物

Orthotopic Implantation Mouse Model



Tumor Microenvironment



Epigenetics



Cancer Metabolism

